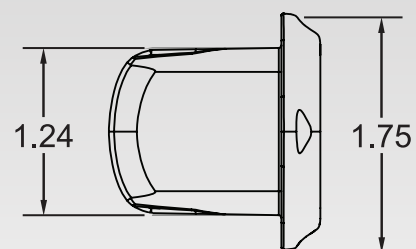
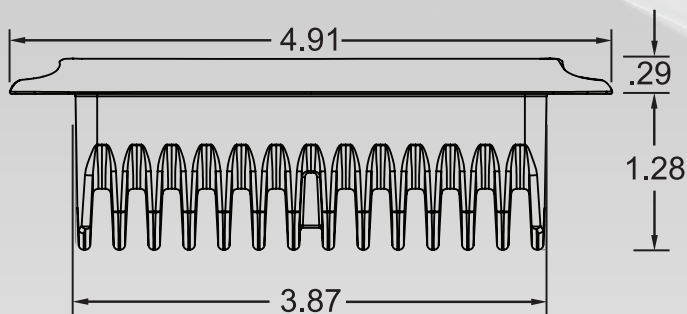


Capri - Flush Mount Cockpit Flood Light



Part #: 101009
Voltage: 10 to 30VDC
Current: 900mA @ 12VDC, 450mA @ 24VDC

Replaces bulky 55W halogen lights
80% less current draw, and 70% smaller than comparable incandescent lights
Completely sealed – IP 67 compliant
Die cast aluminum housing features proprietary coating tested to 3,000 hrs salt spray exposure (ASTM B117)



CE IP67 Compliant



Certified Ignition Protected,
Intrinsically Safe,
USCG